

# Ceiling Cassette -2way- FDTW

## Model No.

FDTW28KXE6F	FDTW90KXE6F
FDTW45KXE6F	FDTW112KXE6F
FDTW56KXE6F	FDTW140KXE6F
FDTW71KXE6F	



**Remote control (option)**

**Wired**

**NEW** FDTW28-71

RC-EX3 RC-E5 RCH-E3

**Wireless**

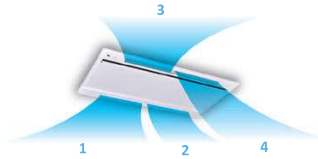
**NEW**

RCN-TW-E2

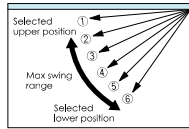
FDTW90-140

### Individual flap control system

According to room temperature conditions, four directions air flow can be controlled individually by flap control system. Due to optimization of outlet design of air flow our new advanced technology, sufficient air flow is secured and long reach of air flow is achieved.



The flap can swing within the range of upper and lower flap position selected with wired remote control.



\* The wireless remote control is not applicable to the individual flap control system.

### Installation workability

#### Drainage spout

Drainage flow test can be done easily by use of this drainage spout.



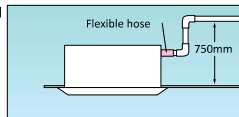
#### Transparent access hole to drain pan

Dirt condition of the bottom of a drain pan can be checked through this transparent access hole without removing drain pan.



#### 750mm Drain Pump

Drain can be discharged upward by 750mm from the ceiling surface close to the indoor unit. It allows a piping layout with a high degree of freedom depending on the installation location.



## Specifications

Item	Model	FDTW28KXE6F	FDTW45KXE6F	FDTW56KXE6F	FDTW71KXE6F	FDTW90KXE6F	FDTW112KXE6F	FDTW140KXE6F	
Nominal cooling capacity	kW	2.8	4.5	5.6	7.1	9.0	11.2	14.0	
Nominal heating capacity	kW	3.2	5.0	6.3	8.0	10.0	12.5	16.0	
Power source		1 Phase 220-240V, 50Hz							
Power consumption	Cooling	0.09-0.09		0.10-0.10		0.14-0.14		0.19-0.19	
	Heating	0.09-0.09		0.10-0.10		0.14-0.14		0.19-0.19	
Sound power level	dB(A)	58						65	—
Sound pressure level	dB(A)	Hi:38 Me:34 Lo:31						Hi:45 Me:41 Lo:37	
Exterior dimensions H x W x D	mm	Unit:325x820x620 Panel:20x1120x680				Unit:325x1535x620 Panel:20x1835x680			
Net weight	kg	Unit:20 Panel:8.5		Unit:21 Panel:8.5		Unit:23 Panel:8.5		Unit:35 Panel:13	
Air flow <sup>1)</sup>	m <sup>3</sup> /min	Hi:12 Me:10 Lo:9						Hi:27 Me:23 Lo:20	
Outside air intake		Possible						Possible	
Panel		TW-PSA-26W-E						TW-PSA-46W-E	
Air filter, Q'ty		Pocket Plastic net x2 (Washable)						Pocket Plastic net x3 (Washable)	
Remote control(option)		wired:RC-EX3, RC-E5, RCH-E3 wireless:RCN-TW-E2							
Installation data	Refrigerant piping size (mm)	Liquid line:φ6.35(1/4") Gas line:φ9.52(3/8")		Liquid line:φ6.35(1/4") Gas line:φ12.7(1/2")		Liquid line:φ9.52(3/8") Gas line:φ15.88(5/8")			

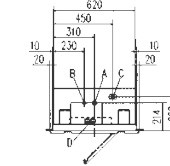
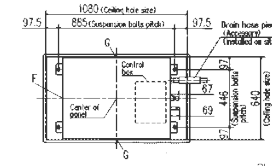
1. The data are measured under the following conditions:(ISO-1). Cooling: Indoor temp. of 27°CDB, 19°CWB, and outdoor temp. of 35°CDB. Heating: Indoor temp. of 20°CDB, and outdoor temp. of 7°CDB, 6°CWB. 2. Sound pressure level indicates the value in a anechoic chamber. During operation these values are somewhat higher due to ambient conditions.

\* PowerFlowHi can be selected. Sound pressure level: FDTW28/45/56/71 42dB(A), FDTW90/112/140 48dB(A), Air flw: FDTW28/45/56/71 14.5m<sup>3</sup>/min, FDTW90/112/140 31m<sup>3</sup>/min.

## Dimensions

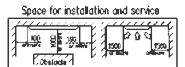
All measurements in mm.

FDTW28KXE6F, 45KXE6F, 56KXE6F, 71KXE6F

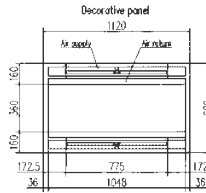
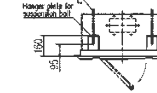
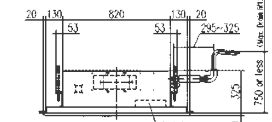


Symbol	Model	Unit	Control
A	Ceiling panel	450(17 3/8")	450(17 3/8")
B	Liquid piping	φ6.35(1/4")	φ6.35(1/4")
C	Gas piping	φ9.52(3/8")	φ9.52(3/8")
D	Flap for return	W:215 H:45	
E	Suspension bolts	(M6)	
F	Outside air opening for ducting	(Round cut)	
G	Air outlet opening for ducting	(Round cut)	

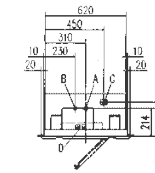
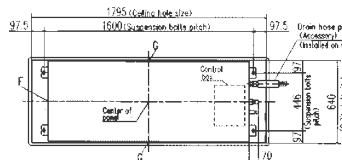
Notes (1) The model name label is attached on the lid of the control box.



Make a space of 400 or more between the units when installing more than one.

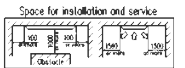


FDTW90KXE6F, 112KXE6F, 140KXE6F



Symbol	Model	Control
A	Ceiling panel	450(17 3/8")
B	Liquid piping	φ6.35(1/4")
C	Gas piping	φ9.52(3/8")
D	Flap for return	W:215 H:45
E	Suspension bolts	(M6)
F	Outside air opening for ducting	(Round cut)
G	Air outlet opening for ducting	(Round cut)

Notes (1) The model name label is attached on the lid of the control box.



Make a space of 500 or more between the units when installing more than one.

